

# Children's Mental Health Services in Texas

---

Texas Children's Mental Health Forum



September 20<sup>th</sup>, 2011

# Development of Resiliency & Disease Management (RDM)

---

## Primary Goals:

- Support the provision of Evidence Based Practices (EBPs)
- Standardize determination of eligibility for services
- Manage use of services
- Measure clinical outcomes
- Determine cost of services

“...to provide the right service to the right person in the right amount to have the best outcomes.”

# Development of RDM Continued...

---

- Strategies to support goals:
  - Uniform Assessment—TRAG
  - Service Packages
  - Utilization Management
  - Quality Management
  - Data Management
  - Contracts



# Children's Mental Health Under RDM

---

## □ Current CMH Service Packages

- Seven Service Packages
- Service Packages are Independent From Each Other

## Re-design of CMH Service Delivery System

- Diagnosis Driven
- Became #1 Priority

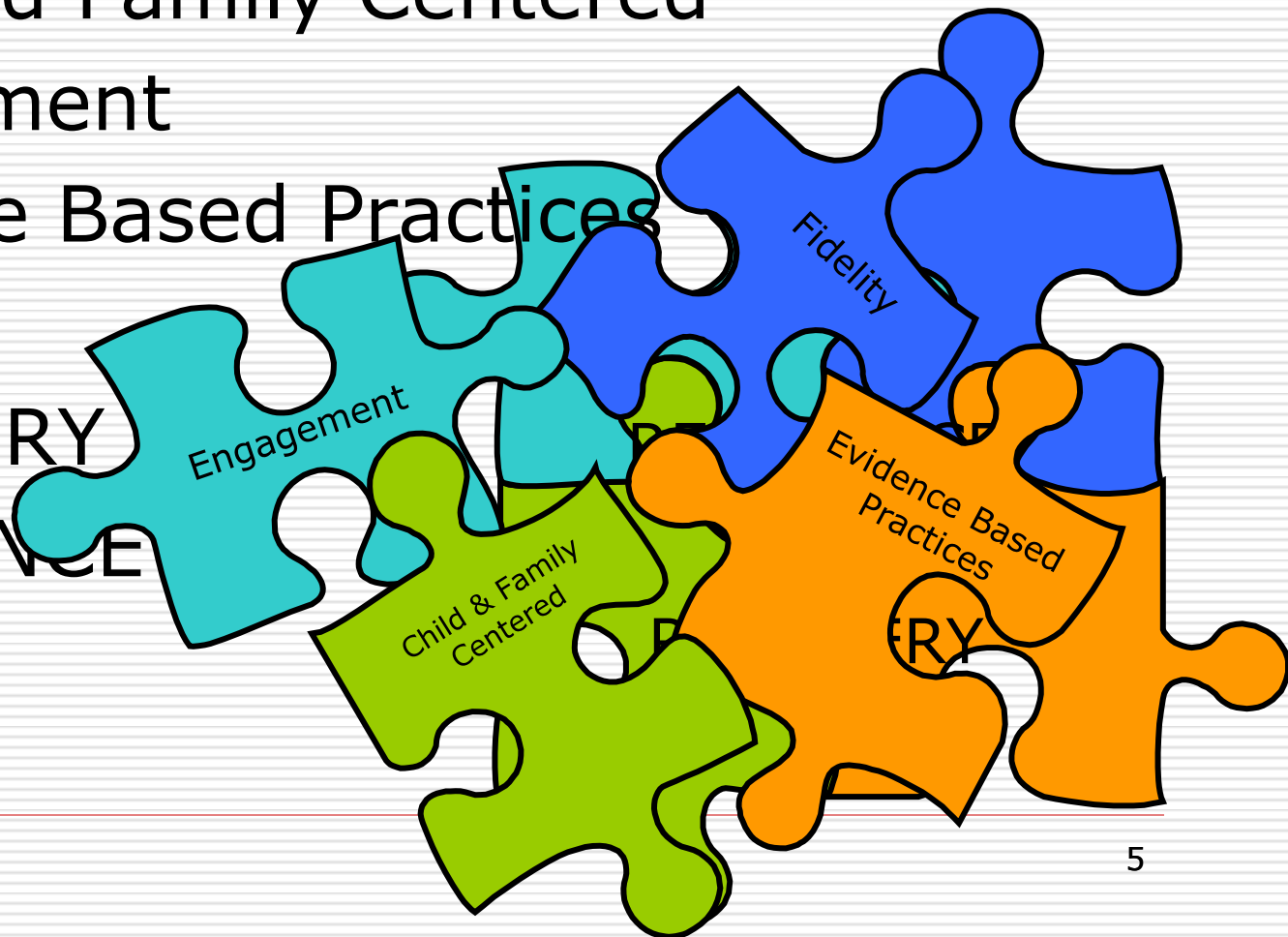
## □ Interviews with direct service staff

- Too many packages
- Population is complex
- Poor assessment instrument

# New Service Packages: Foundational Values

---

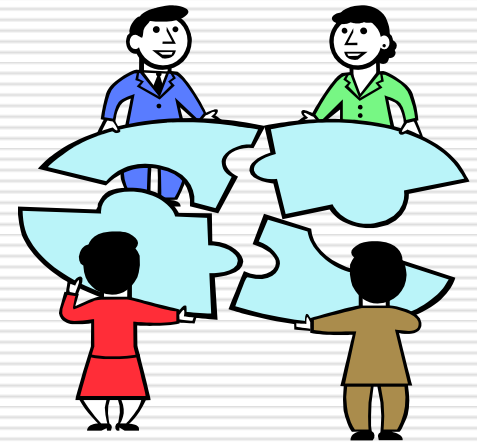
- ❑ Child and Family Centered
- ❑ Engagement
- ❑ Evidence Based Practices
- ❑ Fidelity
- ❑ RECOVERY  
& RESILIENCE



# Foundational Values in Practice

---

- New Assessment Instrument: Child & Adolescent Needs and Strengths (CANS)
  - Nationally used
  - Strengths based
  - Successful pilot in TX
- New Service Package Design
  - Based on Systems of Care principles
  - Intensity Driven: Establishes a Continuum Towards *Recovery* based on needs & strengths identified
  - New Evidence-Based Practices recommended
  - Trauma-Informed Care



# Moving Forward

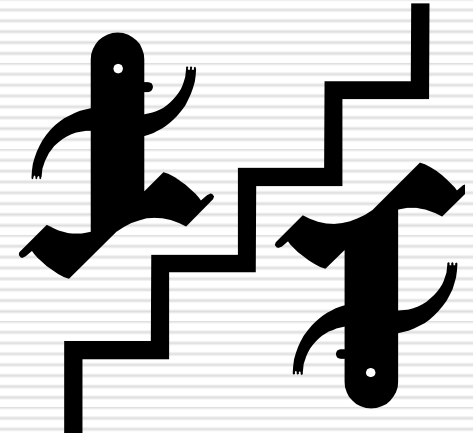
---

## □ System Roll Out

- June 2012—Pilot begins
- September 2012—Statewide Implementation

## □ Current Efforts

- Incorporating into online systems
- Preparing providers & training staff in new protocols



# Questions

---

